

CONNEXIONZ

DISPATCHER

Connexionz RTT system offers a powerful Dispatch and AVL application which has been designed to meet the needs of both small and medium size bus depots. Static, real time and historical information is available to assist dispatchers and supervisors in their decision making, to make their job easier and provide a better level of control.

The Dispatch Application

The Dispatch application is loaded with timetable, schedule (blocks/runs) and rostering information. This data is updated directly from the Scheduling and rostering software so that the most current information is always available for use.

The Dispatch screen provides detailed information on how each trip service is running, comparing real time information to time table data. Each bus and trip has its own profile, enabling the dispatcher to assign the correct bus to a piece of work. Profiles allow additional information to be loaded against each item for example: The Bus; floor height, seating capacity, fuel tank range, wheelchair access and for each Trip; distance, special features, low bridge and the like can be recorded. With this information the likelihood of assigning the wrong bus to a block on work is reduced, saving operator time and money.

A service module allows service staff to book buses for urgent or routine service work, which prevents dispatch staff assigning a bus to a block that will not have the bus available during an allocated service time. Avoiding the time lost in shuttling or "dead heading" vehicles to the depot for service.

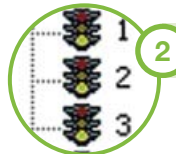
Trip	Vehicle	Route	Route Position	Scheduled Departure	Scheduled Arrival
72	096	1 Airport/City - IB		4:40 p.m.	5:15 p.m.
74	095	1 Airport/City - IB		5:00 p.m.	5:35 p.m.
67	091	1 Airport/City - CB		3:35 p.m.	4:46 p.m.
69	092	1 Airport/City - CB		3:55 p.m.	5:06 p.m.
71	097	1 Airport/City - CB		4:15 p.m.	5:26 p.m.
73	094	1 Airport/City - CB		4:45 p.m.	5:56 p.m.
121	098	2 Mini Route - AC		5:00 p.m.	5:30 p.m.

Timepoint	Arrival	Layover	Departure	Scheduled
Kiwi International	3:58 p.m.	0:01	3:59 p.m.	3:55 p.m.
Terminal - Sky City	4:10 p.m.	0:02	4:12 p.m.	4:05 p.m.
Great Sights DTAT			4:24 p.m.	4:16 p.m.
Sheraton	4:36 p.m.	0:00	4:36 p.m.	4:27 p.m.
Mount Eden Rd & Valley Rd	4:47 p.m.	0:00	4:47 p.m.	4:34 p.m.
Three Kings			4:51 p.m.	4:38 p.m.
Airport - International Arrivals				5:06 p.m.



1 Dispatch Tree

Shows the available options for route. When you choose a route, it gives you a detailed account for that particular route.



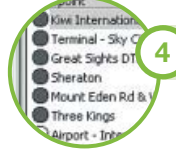
2 Status Icons

Status icons show the actual status of the trip, as well as warnings.



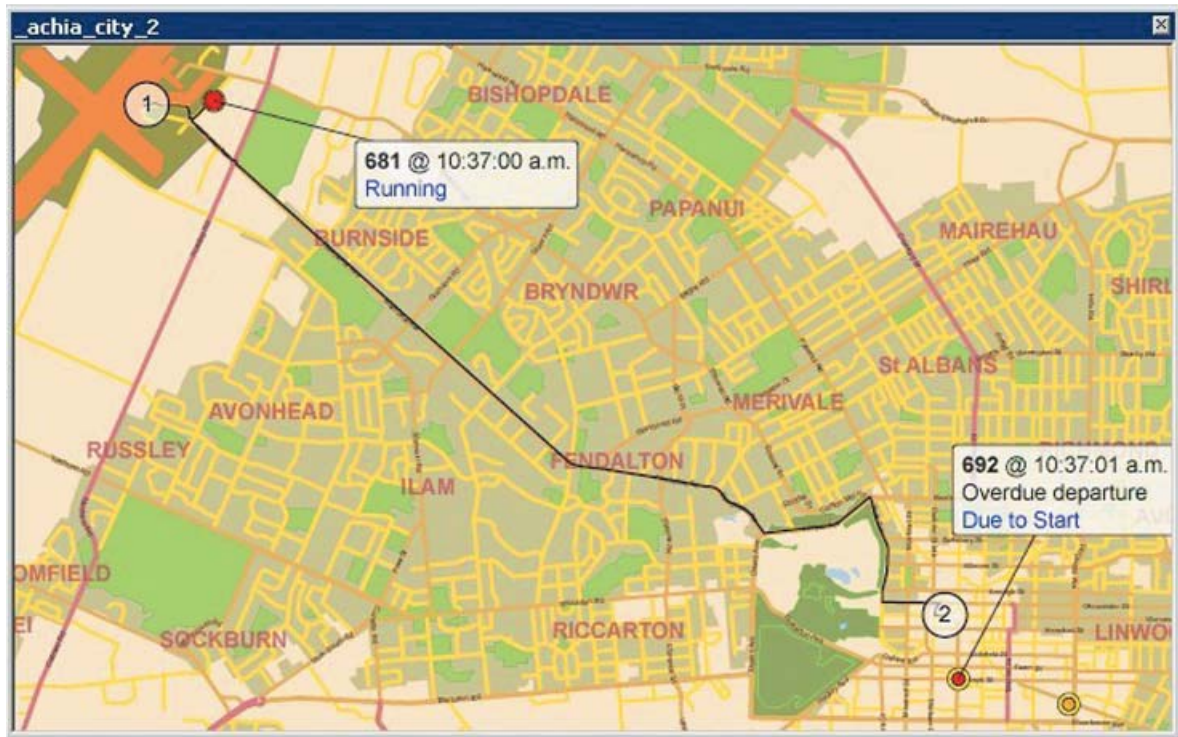
3 Current route position

The current route position of the vehicle at the current point in time. It is shown against the "time elapsed" bar (grey part)



4 Timepoint status

Shows the actual placing of the bus on the route.



The AVL Application

The AVL application in the event of an emergency, allow depot staff to view one or more buses on a GIS map. This information can be used as a directional tool for guiding staff or emergency services to the exact location of a bus or in helping talk a driver back on route when they get lost.

Historical data stored within the application (typically 7 - 14 days Real Time) can be used to display a vehicle path in the event of a complaint, refund claim or accident. This can also be used to confirm the bus number and driver at a certain time and location, ie: if a bus was seen on the corner of x and y street at 3.30pm on Monday the 12th of Feb, who was it? Additional information/layer can be added to the map to show route paths and bus stop information.

The RTT Dispatch/AVL application provides a window into a bus system and a tool that enhances the day to day operation of a bus depot. Its use will improve operational efficiencies, save money and allow better resource utilisation.

Contact Connexionz to find out how the Dispatcher™ can work for you.

***Some features are not available on standard BusFinder™ units.**

